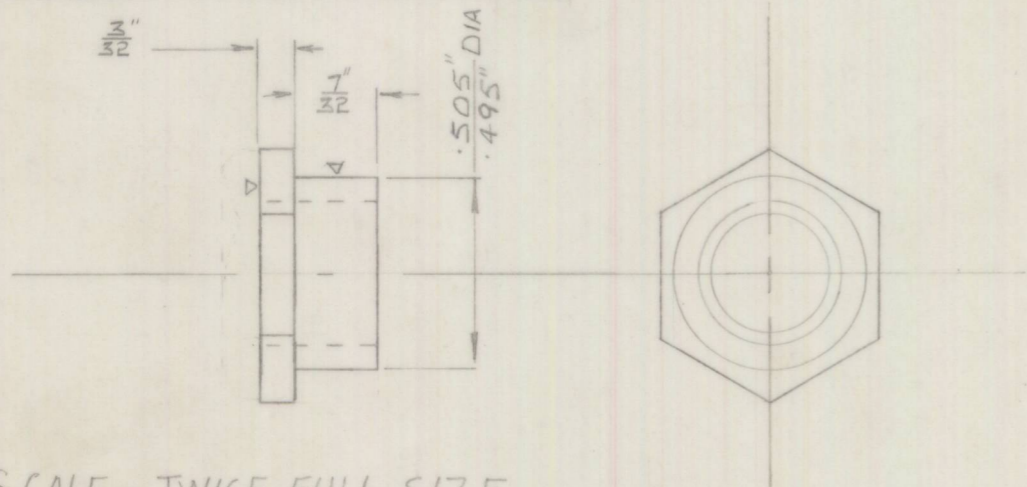
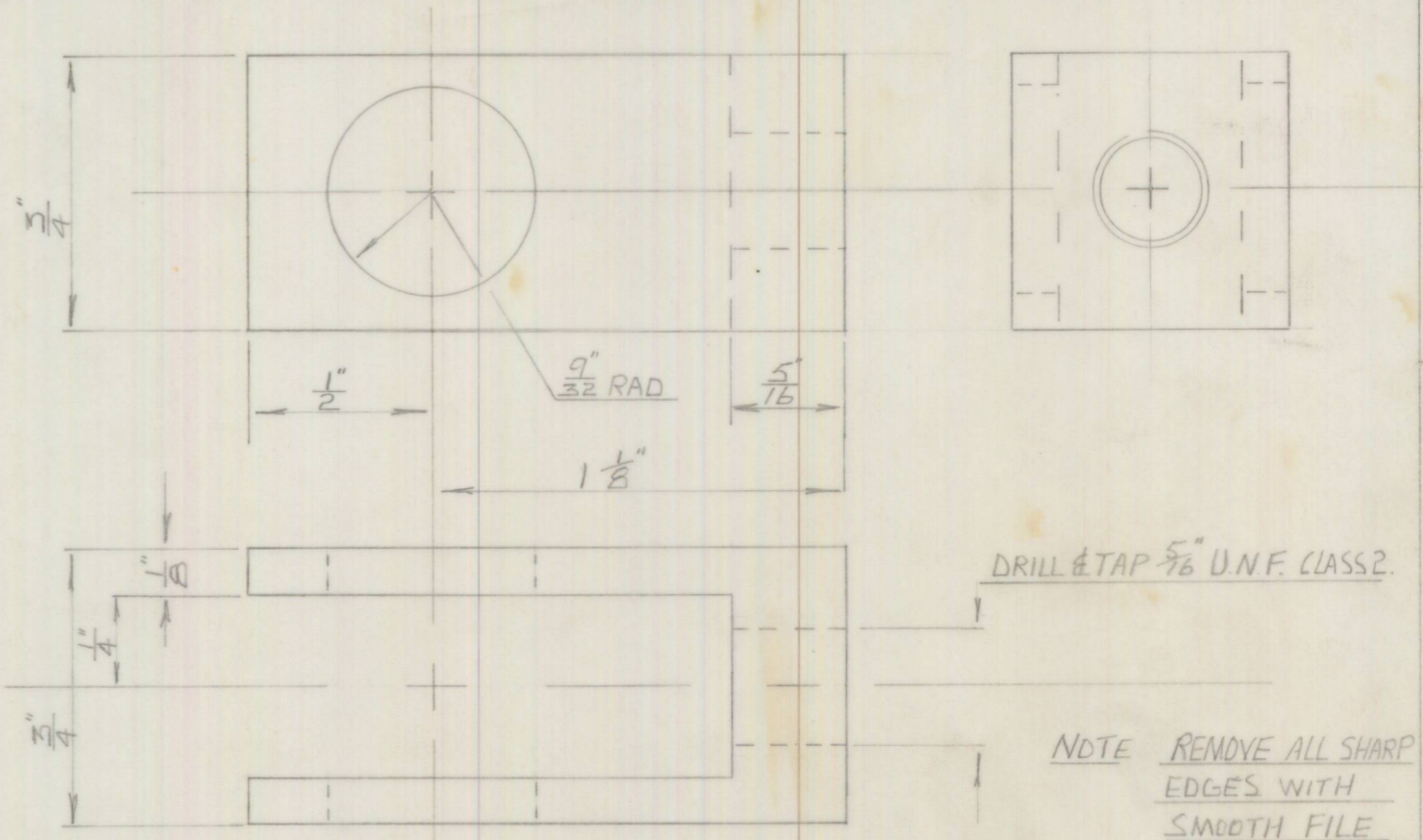


PART N^o 3-I-140 (1) (2) (3)



SCALE - TWICE FULL SIZE
 MAKE FROM 3/8" U.N.F. HEXAGON
 THICK NUT (STEEL)

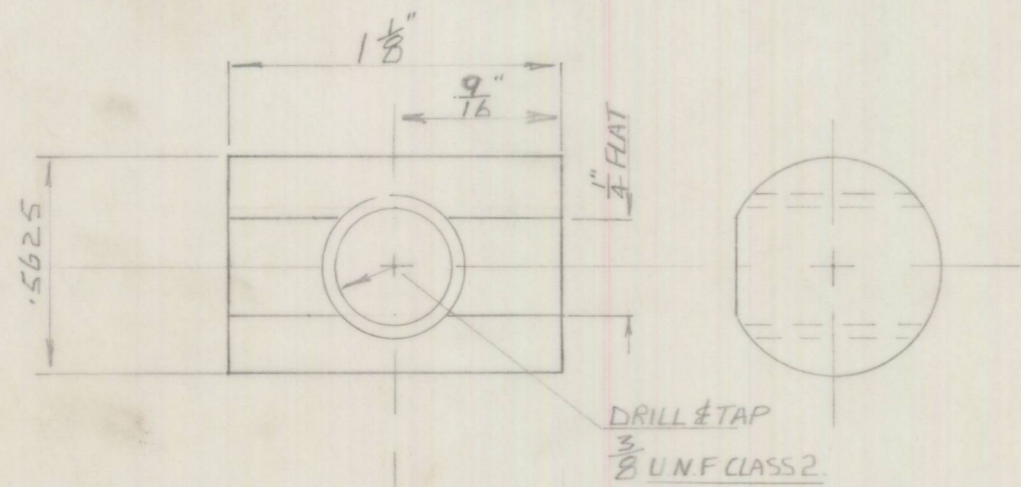
(1) LOCKNUT - BALANCE BAR



SCALE TWICE FULL SIZE MAKE FROM M.S.T. 3/4" SQUARE

NOTE REMOVE ALL SHARP
 EDGES WITH
 SMOOTH FILE

(2) CLEVIS - BALANCE BAR



SCALE - TWICE FULL SIZE
 MAKE FROM 9/16" M.S.T. ROUND BAR

(3) CLEVIS PIVOT

BOWIN LIMITED

SCALE TWICE FULL SIZE LIMITS 1/32 FRACTIONS
 1.005 DECIMALS UNLESS STATED

FINISH CADMIUM PLATE DATE 10-10-67

J.V.J.	DRAWN BY	MATERIALS	SPEC	CONDITION	REMARKS
1	ISSUE	AS STATED			
10-10-67	DATE				
NEW DRAWING	DETAILS	G.A. N ^o	TITLE	CLEVIS PIVOT - BALANCE BAR LOCKNUT	
	APPROVED	ASSY N ^o	PART N ^o	3-I-140 (1) (2) (3)	
	MOD N ^o				