

(2) ROD-ENDS - PM-S-B
OR EQUIV'

SHORTEN ROD-
END TO 1 1/2"

5/8" A.F. HEX. BAR DRILL
TAP (1) END 5/16" U.N.F. R. HAND
(1) END 5/16" U.N.F. L. HAND

TAP 3/8"
U.N.F TO DEPTH
OF 1"

9/16" D X 5/16" D
BORE. A.I.S. TUBE

121° 30'

1 6/16" (REF)

2 HOLES
5/16" D

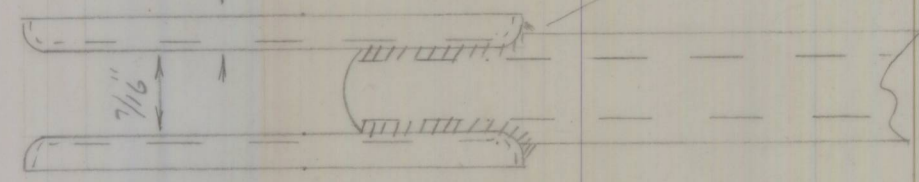
3 45/64"

3 RADS - 5/16"

18 S.W.G. M.S

(1) OFF L.H & R.HAND

TACK WASHERS



ON ARROW A SHOWING
DETAIL OF TUBE FITTING

4 1/8 NTS

6" NTS

THREADS CLASS '3'

FILE TUBE AS SHOWN TO 3/16" WIDTH

BOWIN DESIGNS P/L
33 ORCHARD RD - BROOKVALE.

SCALE FULL	FINISH NICKEL PLATE	DATE 19-6-72
DRAWN BY J.V.S.	ISSUE NO 1	x.2
PART NO PB-C-347		
TITLE TOP CONTROL LINK		SPRING FRONT