

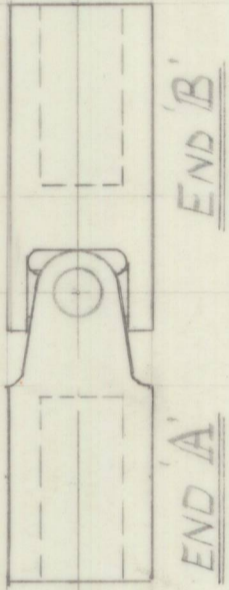
SIZE.	END A	END B.	LOCATION.
1"	SPLINE x 1" DEEP	SPLINE x 1" DEEP.	STEERING COLUMN.
$\frac{7}{8}$ "	BORE .625" ID. x 1" DEEP.	DET $\frac{5}{8}$ " WHIT. x 1" DEEP.	GEARBOX. GEAR CHANGE LINKAGE.
$\frac{7}{8}$ " 2 OFF.	REDUCE O/D TO $\frac{3}{4}$ ". BORE $\frac{1}{2}$ " ID x 1" DEEP.	REDUCE O/D TO $\frac{3}{4}$ ". BORE $\frac{1}{2}$ " ID x 1" DEEP.	4TH MOTION SHAFT. GEAR CHANGE.
$\frac{7}{8}$ " 2 OFF.	REDUCE O/D TO $\frac{3}{4}$ " x 1" LG. BORE $\frac{1}{2}$ " ID x 1" DP	REDUCE O/D TO $\frac{21}{32}$ " x $\frac{3}{4}$ " LG	2ND MOTION SHAFT GEAR CHANGE.

P8-F-379/1

P8-F-379/2

P8-F-379/3

P8-F-379/4



- BOWIN DESIGNS PTY. LTD. -  
33 ORCHARD ROAD, BROOKVALE,  
N.S.W. 2100

SCALE	—	LIMITS	+ $\frac{1}{64}$ IN. UNLESS OTHERWISE SPECIFIED	DATE
FINISH	—			6-8-72
DRAWN BY	MATERIAL	SPEC.	COND.	REMARKS
ISSUE	M.S.			
DATE				
6-8-72				
NEW DRAWING				TITLE ESSEX UNIVERSAL JT. SCHEDULE.
	SHEET OF	PART NO.	P8-F-379.	