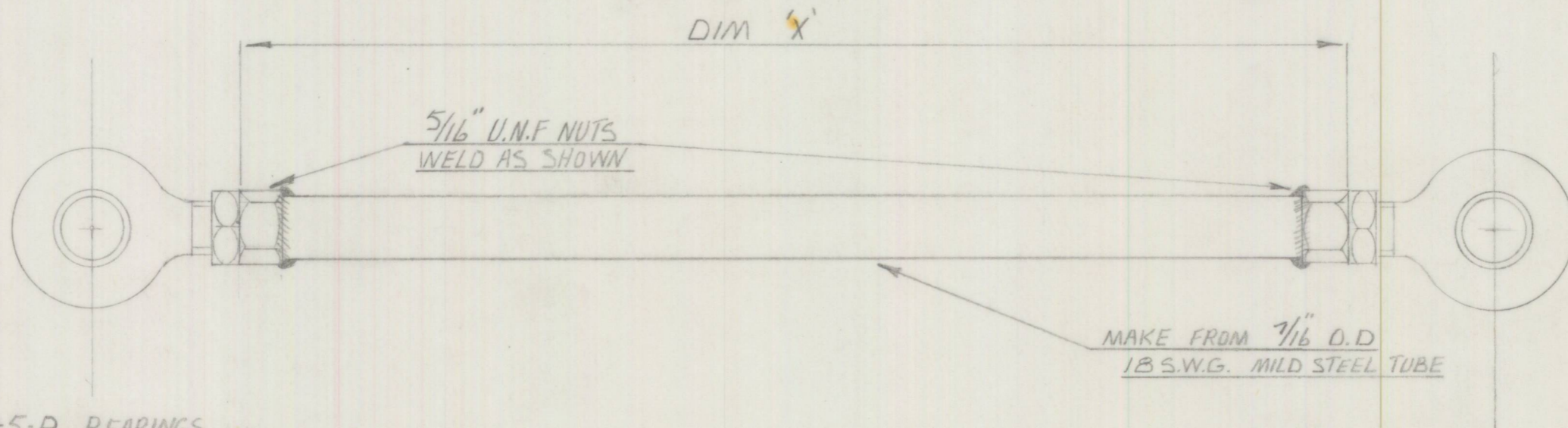


3-C-208
3-D-212
PARTN



PM-5-B BEARINGS
FITTED EACH END

NICKEL BRONZE WELD WHERE
SHOWN

DIM	3-C-208	3-D-212
'X'	2 1/2"	8 5/8"

BOWIN DESIGNS
18 CONSUL RD - BROOKVALE.
SYDNEY - 2100.

SCALE	FULL SIZE	LIMITS	
FINISH	CHROME PLATE & POLISH		DATE 5-7-68
	MATERIAL	COND	SPEC
1.	ISSUE		REMARKS
5-7-68	DATE		
J.V.J.	DRAWN BY		
NEW DRAWING	DETAILS	G.A. N°	TITLE DROP LINKS - ANT-ROLL BAR.
	CHECKED	ASSY N°	3-C-208-FRONT
	APPROVED	PART N°	3-D-212-REAR