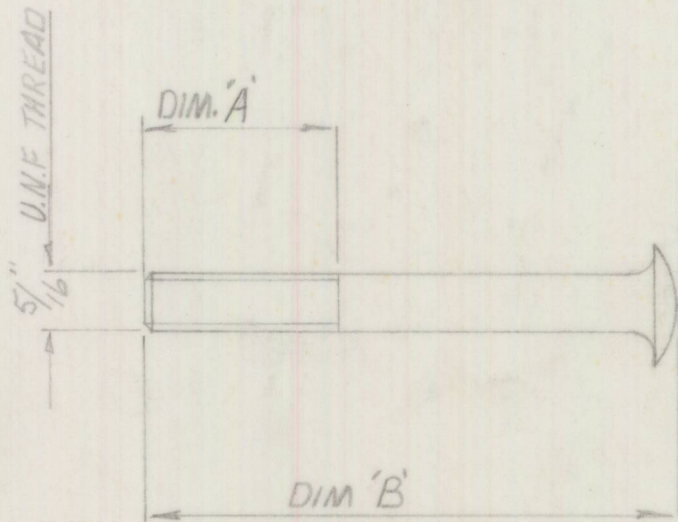


3-I-218

PART NO



MAKE FROM GIRLING PUSH-RODS  
SUPPLIED WITH CYLINDERS

PART N <sup>o</sup>	'A'	'B'
3-I-218 BRAKE.	.8125"	2.125"
3-I-218 CLUTCH	1.00"	2.5"

BOWIN DESIGNS  
18 CONSUL RD - BROOKVALE  
SYDNEY - 2100.

SCALE	FULL SIZE	LIMITS	±.010"
FINISH	CADIUM PLATE.		DATE 7.7.68

		MATERIAL	COND	SPEC	REMARKS
1.	ISSUE				
7.7.68	DATE				
J.V.J	DRAWN BY				
NEW DRAWING	DETAILS	G.A. N <sup>o</sup>	TITLE	MASTER CYLINDER PUSH-RODS.	
	CHECKED	ASSY. N <sup>o</sup>		3-I-218	
	APPROVED				