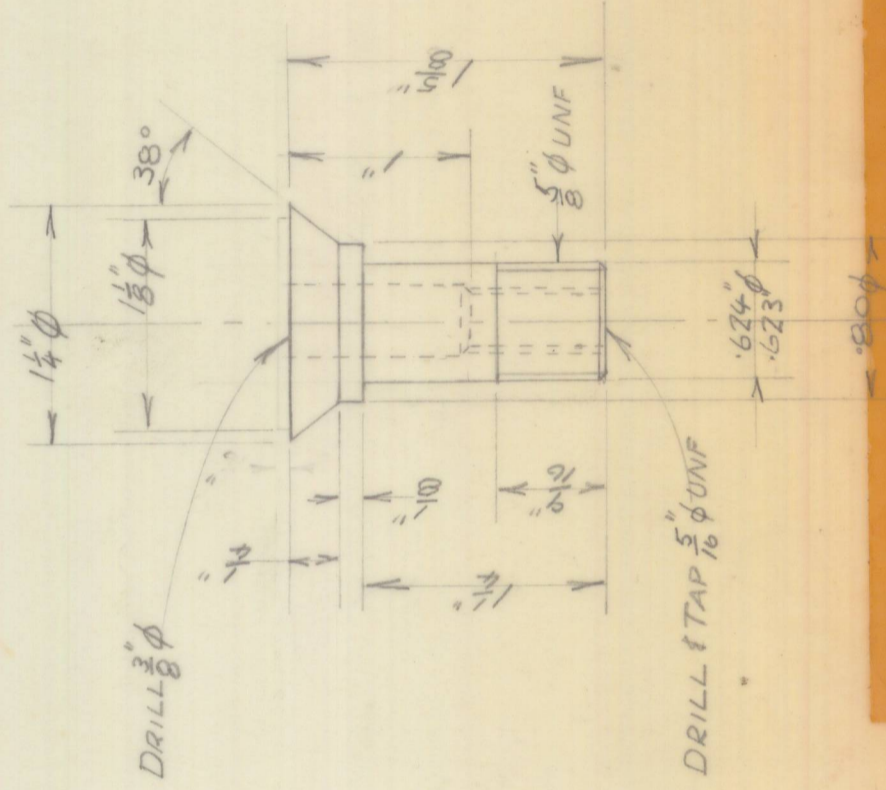


DRILL  $\frac{3}{8}\phi$

DRILL  $\frac{3}{8}\phi$

P6-C-564/1 UPPER PIN



DRILL  $\frac{3}{8}\phi$

DRILL & TAP  $\frac{5}{16}\phi$  UNF

P6-C-564/2  
LOWER PIN

- BOWIN DESIGNS PTY. LTD. -  
33 ORCHARD ROAD, BROOKVALE,  
N.S.W. 2100

SCALE	FULL SIZE	LIMITS	$\pm \frac{1}{64}$ IN. UNLESS OTHERWISE SPECIFIED	DATE
FINISH NATURAL				
DRAWN BY	MATERIAL	SPEC.	COND.	REMARKS
ISSUE				
DATE				
NEW DRAWING				
TITLE	UPPER & LOWER PINS VERT LINK FF CANADA			
SHEET OF				
PART NO.				
				P6-C-564/1/2