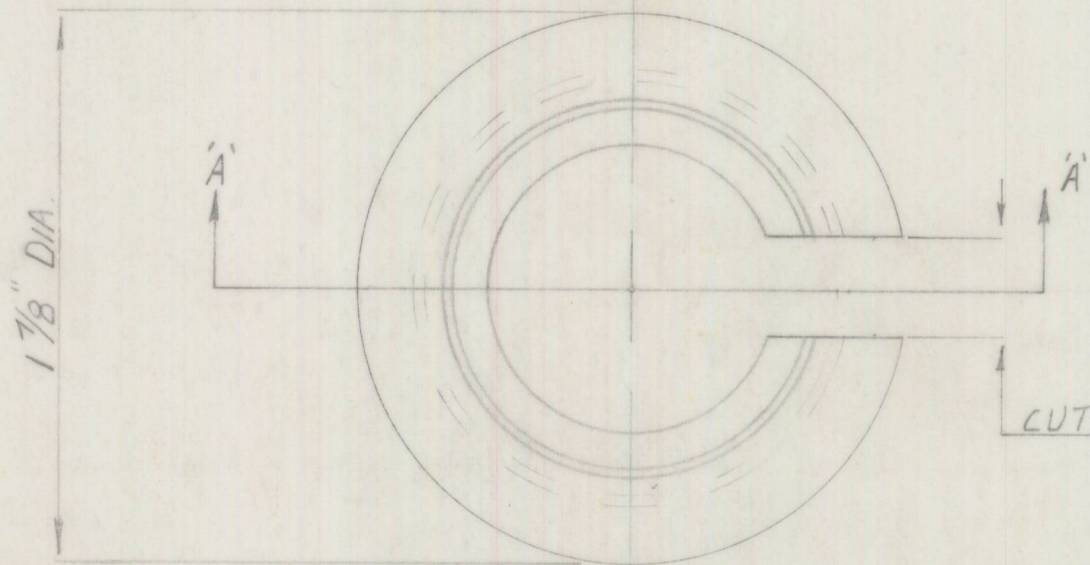
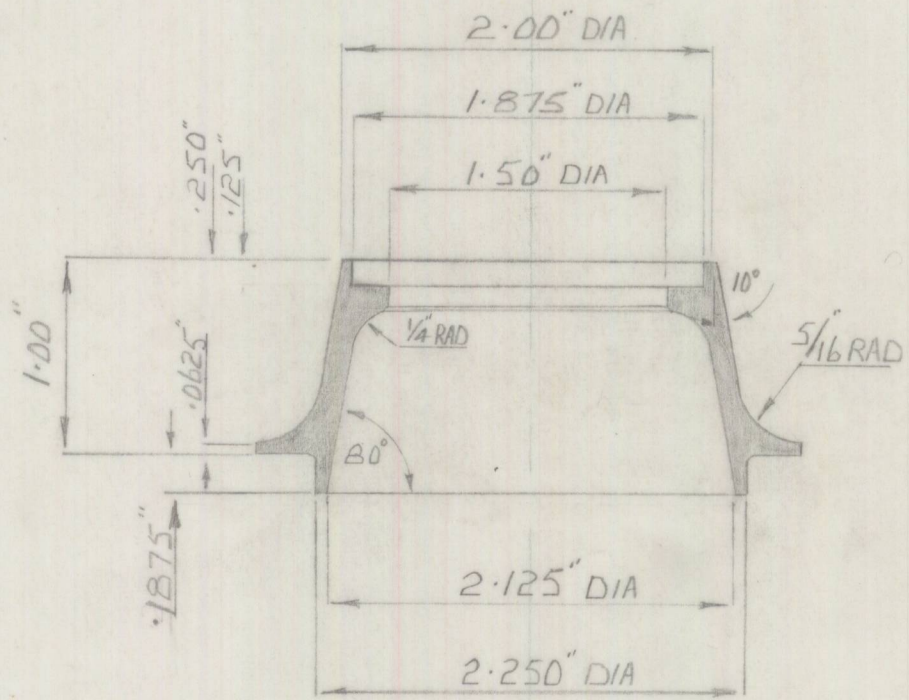


502-C-3

PART NO



CUT SLOT $\frac{1}{2}$ " WIDE AFTER FINAL TURNING



VIEW ON A-A

BOWEN DESIGNS
18 CONSUL RD. BROOKVALE
SYDNEY - 2100.

| | | | |
|--------|-----------|--------|----------------|
| SCALE | FULL SIZE | LIMITS | $\pm .010"$ |
| FINISH | NATURAL | | DATE 5-7-68 |

| | | MATERIAL | COND | SPEC | REMARKS |
|-------------|----------|-----------|-----------|-------------------------------|---------|
| 1. | ISSUE | | | | |
| 5-7-68 | DATE | ALUMINIUM | MACHINING | | |
| J.V.J. | DRAWN BY | | QUALITY | | |
| NEW DRAWING | DETAILS | ASSY NO | TITLE | SPRING ABUTMENT -FRONT-TOP | |
| | APPROVED | G.A NO | PART NO | 3-C-205. | |
| | CHECKED | | | | |