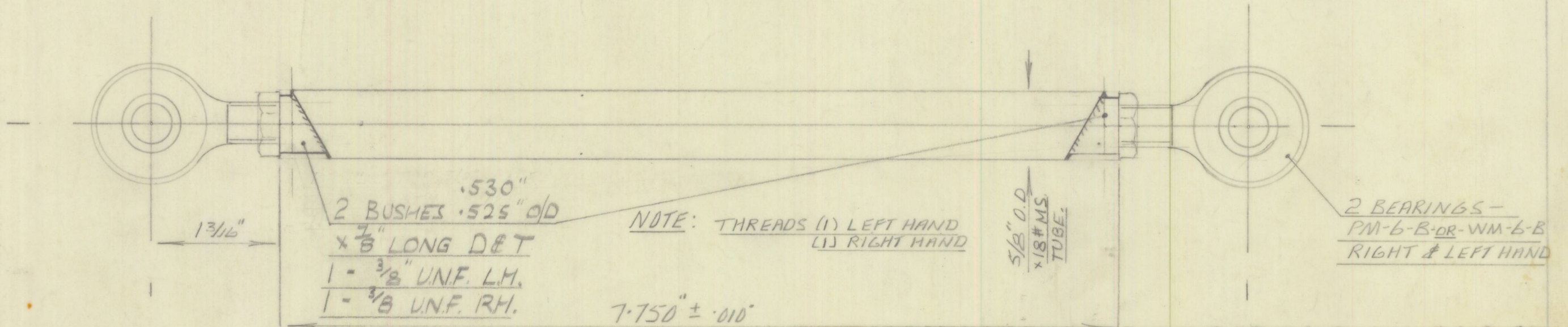


(GEOMETRY REF 10^{3/32}) - TRUE LENGTH 10^{1/8}"
SETTING DIM.



.530"
2 BUSHES .525" O/D
x 7/8" LONG D&T
1 - 3/8" UNF. LH.
1 - 3/8" UNF. RH.

NOTE: THREADS (1) LEFT HAND
(1) RIGHT HAND

5/8" O.D.
x 18#MS
TUBE.

2 BEARINGS -
PM-6-B-DR-WM-6-B
RIGHT & LEFT HAND

7.750" ± .010"

MATL:

FABRICATE FROM 5/8" O.D - 18 S.W.G
MILD STEEL TUBE

-BOWIN DESIGNS PTY. LTD.-
33 ORCHARD ROAD, BROOKVALE,
N.S.W. 2100

SCALE	FULL SIZE	LIMITS	+ 1/64 IN. UNLESS OTHERWISE SPECIFIED
FINISH	NICKEL PLATE		DATE
			7-3-72

EJ	JVJ	DRAWN BY	MATERIAL	SPEC.	COND.	REMARKS
2	1.	ISSUE	M.S		BRIGHT	
15-11-72	7-3-72	DATE				
MAT WAS 5/8" O.D. 8# MS.	NEW DRAWING	DETAILS	TITLE	REAR TOP LINK.		
		SHEET OF	PART NO.	PL-D-266		