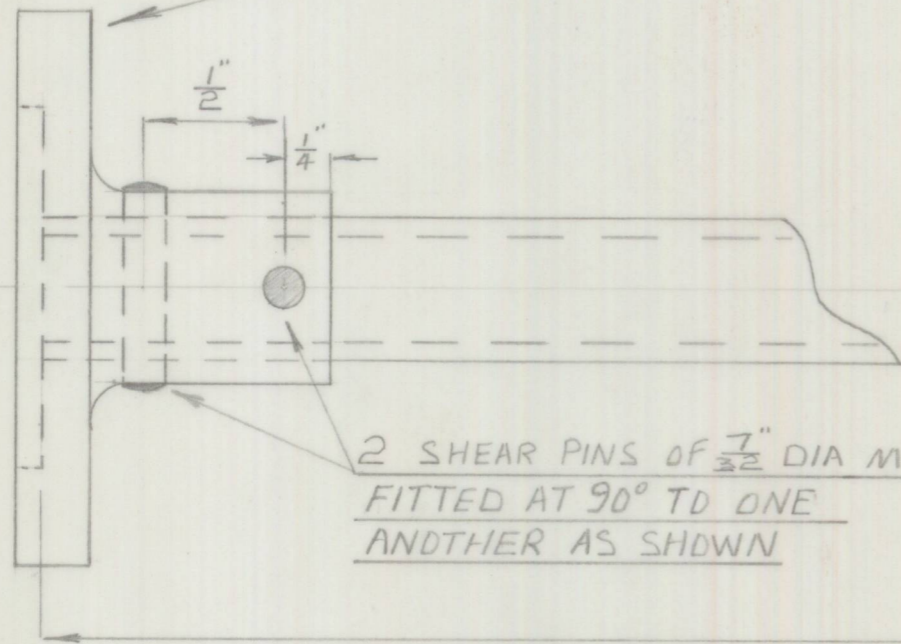


3-H-174

PART No

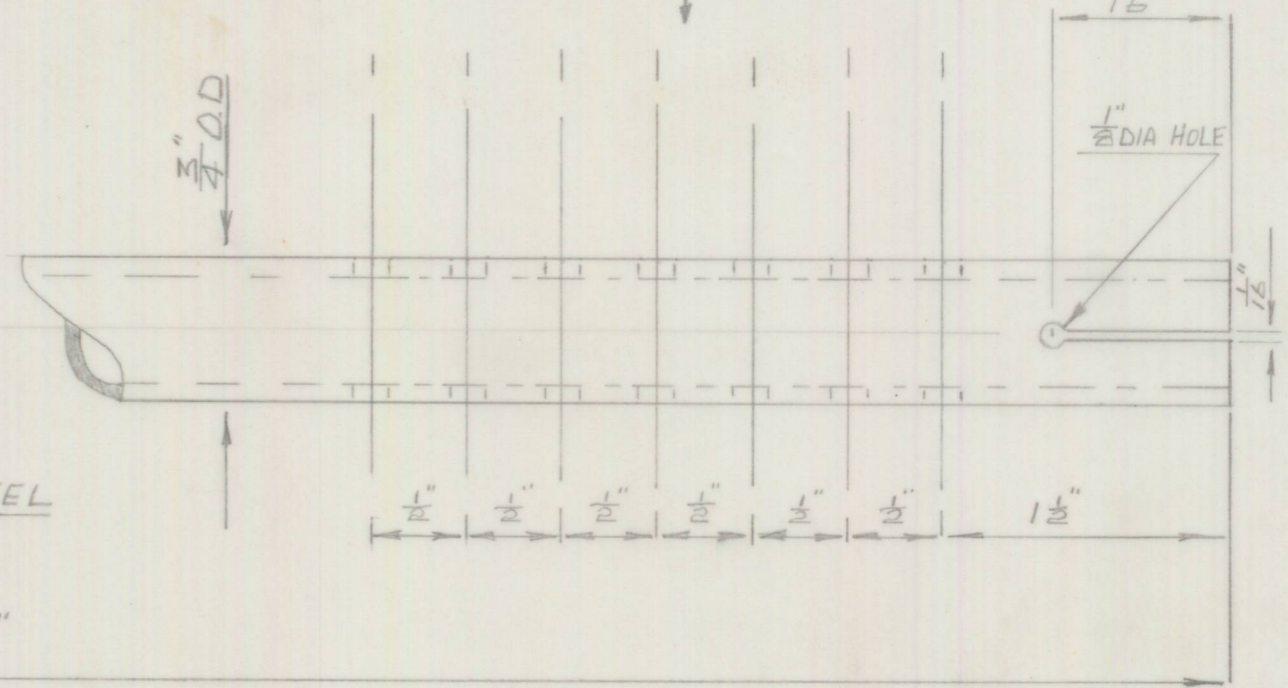
BOSS - PT No 3-H-175



2 SHEAR PINS OF  $\frac{7}{32}$ " DIA MILD STEEL  
FITTED AT 90° TO ONE  
ANDTHER AS SHOWN

14  $\frac{1}{8}$ "

7 THROUGH HOLES  $\frac{3}{16}$ " DIA



BOWIN DESIGNS  
18 CONSUL RD BROOKVALE  
SYDNEY - N.S.W. 2100.

SCALE	1:1	LIMITS	$\pm \frac{1}{32}$
FINISH	CADIUM PLATE BEFORE FITTING PINS.		DATE 19-4-68

I.	ISSUE	MATERIALS	SPEC	COND	REMARKS
19-4-67	DATE	$\frac{3}{4}$ " O.D. MILD STEEL			
J.V.J.	DRAWN BY	TUBEX 135.W.A			
NEW DRAWING	DETAILS	G.A. No	TITLE	STEERING COLUMN - UPPER-	
	CHECKED	ASSY No	PART No	3-H-174	
	APPROVED				