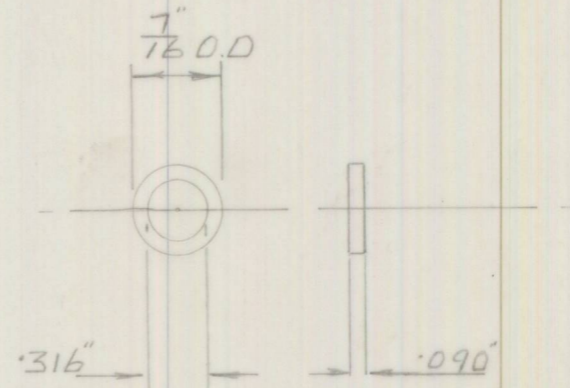
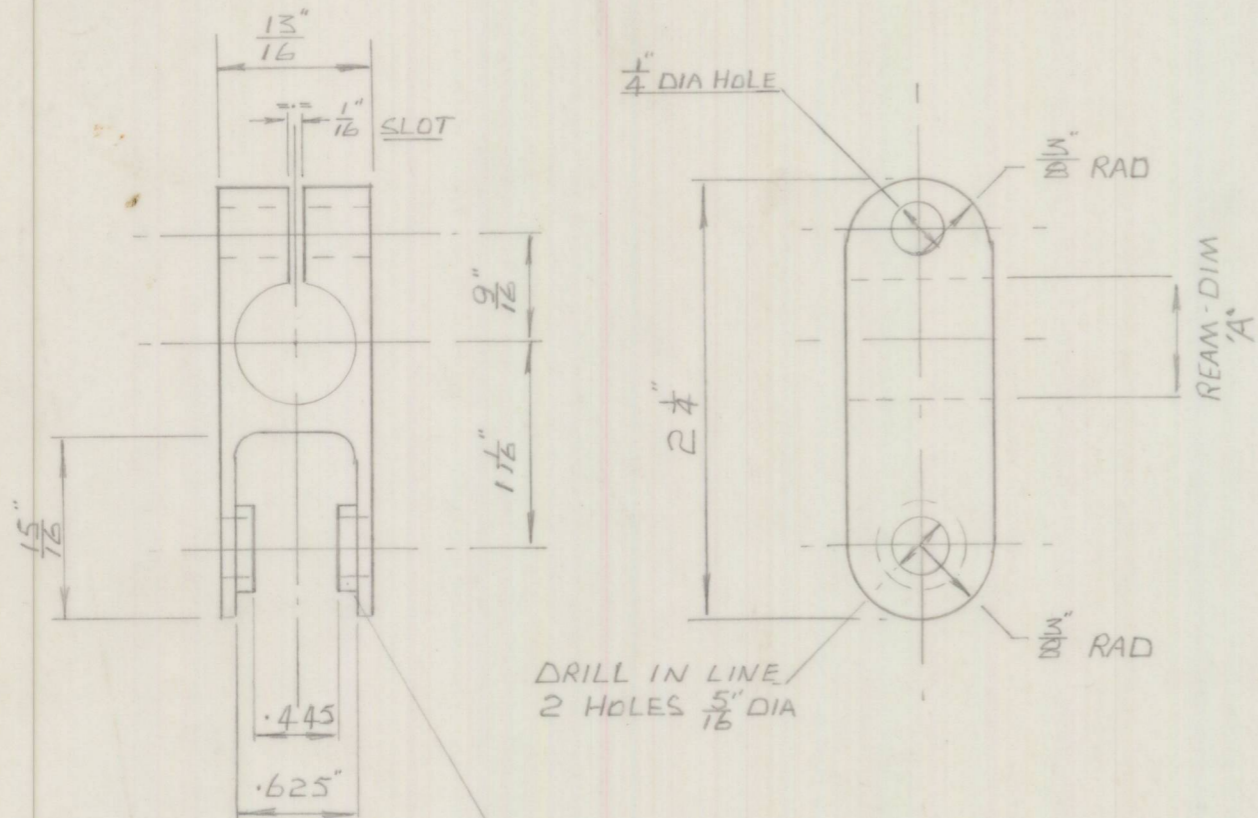


3-D-121

PART N°



DRILL IN LINE
2 HOLES 5/16 DIA

SILVER SOLDER BUSH IN PLACE

| | | | | | |
|------------|-----|------|-----|------|-------|
| | N°1 | N°2 | N°3 | N°4 | N°5 |
| DIM 'A' | 5/8 | 9/16 | 1/2 | 7/16 | 11/16 |

BOWIN LIMITED

SCALE FULL SIZE LIMITS ± 1/64 FRACTIONS
± .005 DECIMALS

FINISH CHROME PLATE & POLISH DATE 29-9-67

| | | | | | |
|-------------|----------|------------|---------|--|---------|
| J.V.J | DRAWN BY | MATERIAL | SPEC | CONDITION | REMARKS |
| 1 | ISSUE | MILD STEEL | | | |
| 29-9-67 | DATE | | | | |
| NEW DRAWING | DETAILS | GA. N° | TITLE | ADJUSTING CLAMP REAR ANTI-ROLL BAR. | |
| | APPROVED | ASSY N° | PART N° | 3-D-121 | |
| | MOD N° | | | | |